

2026 SUMMER PROGRAMME

# Learn English in London

While advancing your language skills by fully engaging in the distinct atmosphere of London, you will also enjoy **iconic landmarks** such as Big Ben, Buckingham Palace, Tower Bridge, and London Eye. **Docklands Academy London** family is excited and ready to welcome you. Join us for an unforgettable summer holiday!



prices  
starting  
from\*

£420

## Early Bird Offer



10% discount for  
registrations completed  
by 30/04/2026.

Accredited by the



for the teaching  
of English in the UK

+44 (0) 20 7515 9695

[docklandsacademy.co.uk](https://docklandsacademy.co.uk)

11 Selsdon Way, City Harbour  
London E14 9GL United Kingdom

# Learn, Explore, Experience

Our program offers **15 hours of engaging English lessons per week**, complemented by high-quality **course materials** to support your learning journey. Kickstart your experience with a comprehensive **orientation**, helping you settle in smoothly. For added convenience, you can choose optional **hotel accommodation** and **food and beverage packages**, along with **airport transfer and a travelcard** for easy travel around the city.

Enjoy a rich selection of social and cultural activities, designed to deepen your cultural experience in the local culture and practice your English in real-world settings.



## What's Included

- 15 hours of English lessons per week
- Course Materials
- Orientation
- Hotel Accommodation (Optional)
- Food&Beverage (Optional)
- Airport Transfer & Travelcard (Optional)
- Social and Cultural Activities

\*Registrations will continue in two-week session intervals during the summer term holiday.  
\*Optional services are available, with pricing discussed upon request. Please reach out for details.

# Week 1

## SCHEDULE

Learning extends beyond the classroom during excursions, seamlessly connecting with our specially designed curriculum to enrich each experience in our summer program.

### DAY 1

**Morning:** Arrival  
**Afternoon:** Transfer to accommodations  
**Evening:** Dinner

### DAY 2

**Morning:** Breakfast + English Lesson  
**Theme:** Introduction to London and Basic English for Travel  
**Afternoon:** Lunch + Guided Walking Tour of Central London  
**Evening:** Dinner

### DAY 3

**Morning:** Breakfast + English Lesson  
**Theme:** English for Shopping and Eating Out  
**Afternoon:** Lunch + Visit to Covent Garden  
**Evening:** Dinner

### DAY 4

**Morning:** Breakfast + English Lesson  
**Theme:** English for Art and Culture  
**Afternoon:** Lunch + Visit to the National Gallery  
**Evening:** Dinner

### DAY 5

**Morning:** Breakfast + English Lesson  
**Theme:** English for History and Storytelling  
**Afternoon:** Lunch + Visit to the Tower of London  
**Evening:** Dinner

We offer flexible meal schedules at partner restaurants with special discounts tailored for each group.

English lesson contents are theme-based & designed according to the afternoon activities & tours.



\*Our schedule can be customised to suit your interests and needs.

# Week 2

## SCHEDULE

Learning extends beyond the classroom during excursions, seamlessly connecting with our specially designed curriculum to enrich each experience in our summer program.

### DAY 1

**Morning:** Breakfast + English Lesson

**Theme:** English for the Environment and Sustainability

**Afternoon:** Lunch + Visit to London's Green Spaces

**Evening:** Dinner

### DAY 2

**Morning:** Breakfast + English Lesson

**Theme:** English for British History

**Afternoon:** Lunch + Visit the British Museum or Old Bailey

**Evening:** Dinner

### DAY 3

**Morning:** Breakfast + English Lesson

**Theme:** English for Science and Technology

**Afternoon:** Lunch + Science Museum or Natural History Museum

**Evening:** Dinner

### DAY 4

**Morning:** Breakfast + English Lesson

**Theme:** English for Theatre and Performing Arts

**Afternoon:** Lunch + Visit to the Globe Theatre or West End

**Evening:** Dinner

### DAY 5

**Morning:** Breakfast

**Theme:** Presentations and Project Work

**Afternoon:** Diploma Ceremony

**Evening:** Dinner

One supervisor/teacher will be hosted for every group of 10 students.



\*Our schedule can be customised to suit your interests and needs.

# Flavours of the World

London is the ultimate foodie adventure! From legendary street eats to creative dining spots, there's a world of flavours waiting to be discovered around every corner.

## INDIAN



## STREET FOOD



## CHINESE



## FRENCH



## GREEK



## KOREAN



## AMERICAN



Each group can enjoy a dining experience tailored to their taste, with flexible meal schedules and delicious options from our partner restaurants!

These are suggestions to showcase London as a global culinary hub. Click on cuisine names to see top TripAdvisor options, and refer to the price range for a general idea of costs in London.



TURKISH GRILL



SPANISH TAPAS

AMORA GUSTO TAPAS & BAR

HAZEV RESTAURANT

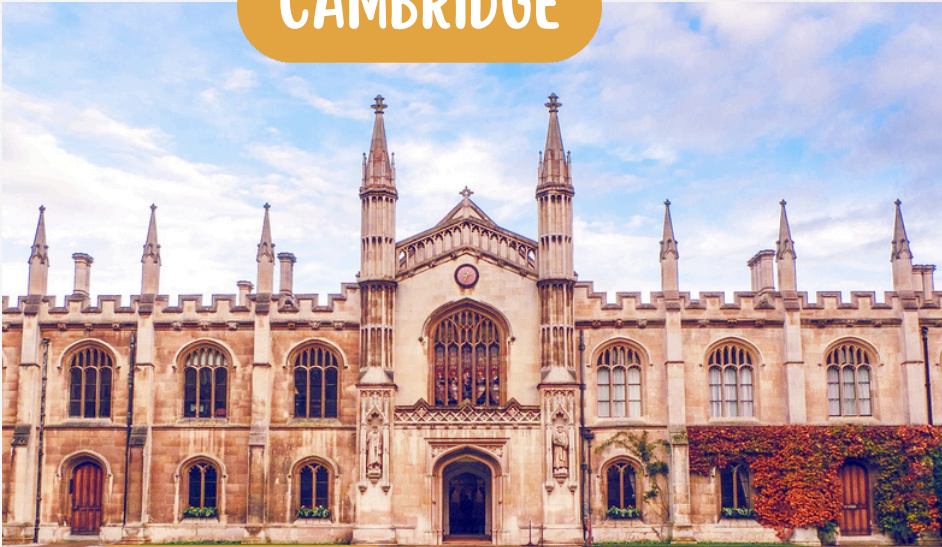


BRITISH FISH & CHIPS

TAS RESTAURANT BLOOMSBURY

\*Price range may vary in central London, typically averaging around £10-£40 per person depending on the cuisine, meal time, and restaurant choice.

CAMBRIDGE



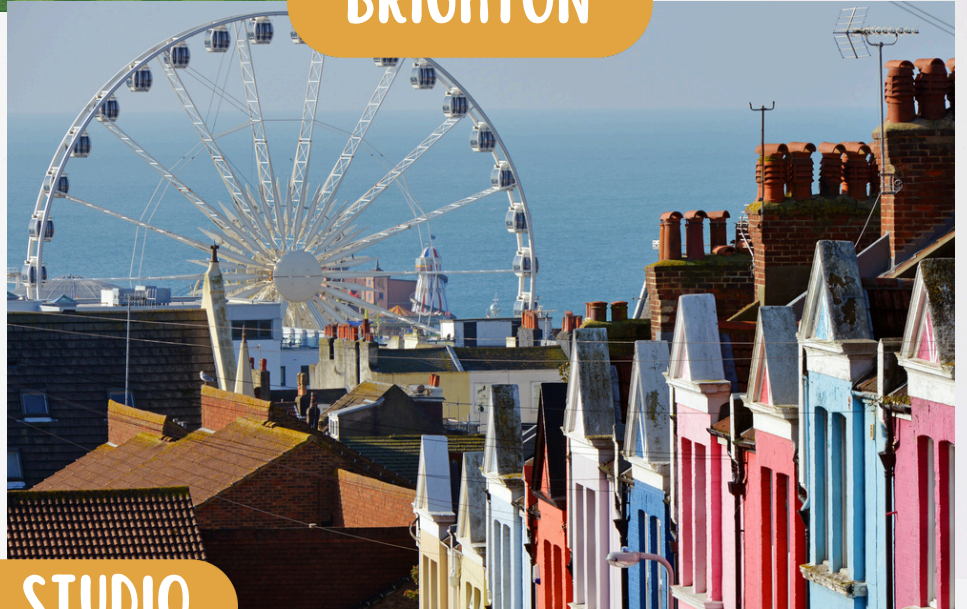
OXFORD



LEGOLAND



BRIGHTON



HARRY POTTER STUDIO



Our excursion program is designed with the principle of delivering an unforgettable experience, offering flexibility tailored to the preferences of our students. Let's explore together!

# Accommodation

Ever wondered what it's like to stay in a room inspired by a historical icon? Imagine a night in spaces named after Charles Dickens, Jane Austen, Marie Curie, George Orwell, Isaac Newton, and many others. At the **Limehouse Library Hotel London**, we offer a truly magical experience with 75 uniquely designed rooms, each dedicated to one of history's most celebrated figures. Whether you're exploring the city's top sights or nearby academic hubs, our hotel offers a memorable, enriching stay.

Available as part of your package or as an optional upgrade, this is your chance to make your London stay truly unforgettable!

Accommodation may be arranged at our boutique-style partner Limehouse Library Hotel London, perfectly situated for both easy access to the city center and proximity to key London attractions and educational institutions.



**TURKISH BATH**



**AFTERNOON TEA**



**BREAKFAST**




**HERMAN MELVILLE ROOM**


 **Expedia**  
9.2 Wonderful

**Booking.com**

Fabulous 8.7  
1,047 reviews

 **Cleanliness 9.3**

  
**4.6**  
230 reviews

 **Tripadvisor**  
82 reviews



# Our Partner Restaurants

## Special Offers

Journey through a culinary world with a **20% discount on lunch and dinner at our partner group restaurants!**

Our collection of seven exceptional central London locations invites you to indulge in vibrant Turkish, Mediterranean, Middle Eastern, and Spanish cuisine, alongside select global dishes. Treat yourself to an exceptional dining experience with exclusive savings in the heart of the city!



### hazev

#### Hazev Restaurant

Discovery Dock  
Apartments West, 2 S  
Quay Square, London  
E14 9RT, UK



### TAS AUTHENTIC TURKISH CUISINE

#### Tas Restaurants

*The Cut*

33 The Cut, London SE1 8LF

*Pide*

20-22 New Globe Walk, London  
SE1 9DR

*Bloomsbury*

22 Bloomsbury St, London  
WC1B 3QJ

*Borough*

72 Borough High St, London SE1 1XF



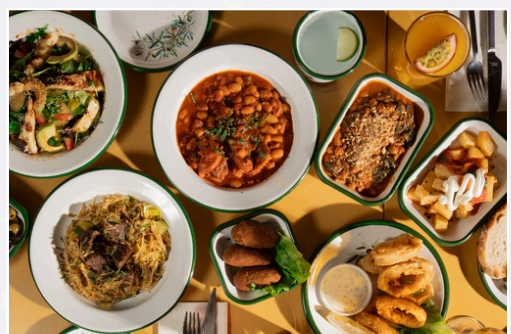
#### Ev Restaurant

The Arches, 98 Isabella St,  
London  
SE1 8DD, UK



#### Amora Gusto

94-95 Isabella St, London  
SE1 8DD, UK



# Where is Our Campus?

11 Selsdon Way, City Harbour,  
E14 9GL, London, United Kingdom



**Canary Wharf - 10 mins**

**Greenwich - 15 mins**

**Tower of London - 20 mins**

**Tower Bridge - 20 mins**

**St. Paul's Cathedral - 25 mins**

**The Shard - 25 mins**

**Borough Market - 25 mins**

**The O2 Arena - 15 mins**

**Museum of London Docklands - 5 mins**

\*The travel time is calculated in minutes for journeys using the DLR and Jubilee Line (Underground).

**+44 7936 848 637**

You can contact us for more information about our school through our WhatsApp line!